

# Kansas Professional Engineer News

MAY 2023

## INSIDE THIS ISSUE:

PRESIDENT'S MESSAGE

MATHCOUNTS UPDATE

FOUNDATION REPORT

UPCOMING  
EVENTS

THE OFFICIAL PUBLICATION OF THE KANSAS  
SOCIETY OF PROFESSIONAL ENGINEERS



# INSIDE THIS ISSUE:

3.....	PRESIDENT'S MESSAGE
4.....	2023 MATHCOUNTS
4.....	NEW MEMBERS
5.....	BOARD OF DIRECTORS
6.....	UPCOMING EVENTS
7.....	FOUNDATION REPORT
8.....	PARTNER SPONSORS



## KANSAS PROFESSIONAL ENGINEER NEWS

### **Publisher**

Travis Lowe, CAE

### **Contact**

825 S. Kansas Ave., Ste. 500  
Topeka, KS 66612  
(785) 233-2121  
[info@kansasengineer.org](mailto:info@kansasengineer.org)

Kansas Professional Engineer Newsletter is published bi-monthly by the Kansas Society of Engineers, 825 S. Kansas Ave., Suite 500, Topeka, KS 66612. Opinions expressed by authors herein are not necessarily those of the Society. As a matter of policy, KSPE does not endorse any item, product or advertisement.

# A MESSAGE FROM YOUR KSPE PRESIDENT

by Kiel Johnson, P.E., F.NSPE



Happy springtime everyone! I love this time of year with everything beginning to grow again, flowers are blooming and the bees are buzzing. The Royals haven't been too hot to start the season, but I still enjoy listening and watching them when I can. The Johnson household is busy with soccer for the kiddos, planting our garden and never-ending yard tasks that most of us partake in.

I had the great opportunity in April to meet with the High Plains Chapter in Garden City. We met at the Hidden Trail Brewery and had the opportunity to review many of the strategic planning topics that have been discussed with the other chapters. As I've come to find out, many of the chapters face similar versions of the same issues that have been discussed at the state level. I always find it rewarding to discuss with folks one-on-one about topics that are impacting their everyday lives and how we can find a way to move forward and alleviate the issues. I've taken this feedback to heart and will be passing along this information to Kerrie as she takes up the reigns after this coming election.

In my final month of presidency, my final ask to everyone is to complete the KSPE survey if you haven't yet. We have just over 50 responses at this time which is only just over 10% of the membership. It's vital that we receive as much feedback as possible to help enable Kerrie and the Board to move forward with the will of the membership. This organization exists to support and promote the engineering profession and license. Please help us to identify where these efforts are needed and are the most effective!

This legislative year closed out on a high note. The bank of KDOT continues to remain closed and the budget adds support to the tune of \$220M over four years to assist local governments in matching federal funds. The water plan fund saw its first major funding boost in recent times with HB 2302 with approximately \$35M promised. House Bill 2279 was also signed which includes reporting requirements for the Ground Water Management Districts and Senate Bill 205 which pertains to water rights and multi-year flex accounts. The Government Relations Committee for KSPE was very active this past legislative season and continues to be the face of KSPE when discussing bills with legislators.

ABET accredited engineering programs across the state, public and private, got a boost from HB 2292 which provides funding similar to the UEIA bill that was extended for another 10 years back in 2021. Even though KSPE only testified on a single bill in committee this past legislative season, we remain vigilant on reviewing any and all legislation that can impact engineering or licensure at the state house. Thanks to Travis and his team for staying on top of over 800 bills that were introduced this year!

In closing, I want to encourage everyone to attend the State Conference in Olathe from June 21st to 23rd. The planning committee has put together another great conference and I look forward to seeing everyone there. At the very least, you will get to see Kerrie become your next President. That way, many years down the road, you can say, "I was there when superstar Kerrie became President." I know she is going to take KSPE to new heights and give the organization a boost like no other. I'd also like to thank the Board, Executive Committee, Committee members and Chapter leaders for their continued dedication to the organization. Without your time and effort, this organization would not be what it is today.

# 2023 MATHCOUNTS

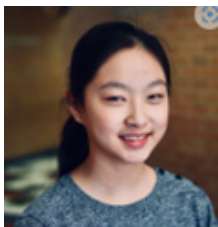
by David Johnson, P.E., LS  
Kansas MATHCOUNTS Coordinator

The state MATHCOUNTS competition was held at Washburn University on March 4 and we now have a team of 4 students with a coach making preparations for the national contest in May! A BIG THANK YOU to all that helped by grading, proctoring, taking photos or just doing what needed to be done. In all, there were about 2 dozen volunteers with about ½ KSPE members and the rest college students, faculty and KSPE family members.



The Kansas Team Members. Left to Right: Mahi Kohli, California Trail Middle School (1st Place), Neal Joshi, Pleasant Ridge Middle School (4th Place), Rishi Goli, Lakewood Middle School (2nd Place), Solon Xia, Susan Anthony Middle School (3rd Place), Rebecca Xue, California Trail Middle School (Coach)

There was a bit more fanfare this year than in the past. This was the second year with the event name including “Honoring Don and Lynne Rathbone” because of their many accomplishments and generosity. This was also the FIRST year for the Lynda Rathbone MATHCOUNTS award where \$1000 was given to the Kansas team students. Because the team members and coach receive their trip to the national contest compliments of the national MATHCOUNTS sponsor, this \$1000 will be split 4 ways to help defray the cost for their parents to attend. In addition to this award, a \$1000 Washburn University scholarship was also presented to Mahi (1st Place Individual).



On another interesting note, by being the coach of the first place state team (California Trail Middle School), the Kansas national coach this year is Rebecca Xue. She is a former MATHCOUNTS participant and in 2021 received a scholarship (first ever recipient) from the national MATHCOUNTS organization to teach students through local organizations like the Happy Learning Foundation and SAM's club, as well as coaching MATHCOUNTS. The following photo is from 2 years ago when she won the award as a 10th grader.

Thanks again to all that donated both time and resources to host another successful event!

## WELCOME NEW MEMBERS

### EASTERN CHAPTER

Colin Mandrick, P.E.  
Burns and McDonnell



NATIONAL  
SOCIETY OF  
PROFESSIONAL  
ENGINEERS

## STUDENT MEMBERS JOIN FOR FREE

Networking. Leadership.  
Licensure. Advancement.

JOIN NOW



# 2022–2023 BOARD OF DIRECTORS

## OFFICERS



**President**  
Kiel Johnson,  
P.E., F. NSPE



**President-Elect**  
Kerrie Greenfelder,  
P.E., DBIA, BCEE,  
ENVSP



**First Vice President**  
Jeff Lackey, P.E.



**Second Vice President**  
C.W. Harper, P.E.



**Treasurer**  
Travis Stryker, P.E.



**Secretary**  
Ian Reekie,  
P.E., PTOE



**NSPE Delegate**  
Wayne Nelson,  
P.E., F. NSPE



**Immediate Past President**  
Brian Coomes, P.E.

Since 1910, the Kansas Society of Professional Engineers has represented all engineering disciplines and practices for the state's licensed professional engineers. We represent licensed professional engineers who practice in industry, construction, private practice, education, and government. The Kansas Society of Professional Engineers membership provides professional engineers with the resources and services needed to be better informed and better connected within the professional engineers in your community.

## PRACTICE DIVISION CHAIRS



**PEC**  
Mike Hoffman,  
P.E.



**PEHE**  
Thomas Roberts,  
P.E., F. NSPE



**PEG**  
Gary Janzen,  
P.E.



**PEI**  
Amy Martens,  
P.E.



**PEPP**  
Cameron  
McGown, P.E.

## STATE DIRECTORS



**Eastern**  
Kurt Rotering, P.E.



**Smoke Valley**  
Karla Waters, P.E.



**Southeast**  
Norman Philipp,  
P.E., CM-BIM



**High Plains**  
Trevor Ahring, P.E.



**Topeka**  
Jeff Lolley, P.E.



**Tri-Valley**  
Thomas Roberts,  
P.E., F. NSPE



**Wichita**  
Mike Hoffman,  
P.E.

## 2022–2023 CHAPTER PRESIDENTS

**Eastern Chapter**  
Chad Hall, P.E.  
[email](#)

**High Plains Chapter**  
CW Harper, P.E.  
[email](#)

**Smoky Valley Chapter**  
Rex Ritter, P.E.  
[email](#)

**Southeast Chapter**  
Norm Philipp, P.E.  
[email](#)

**Tri-Valley Chapter**  
Jared Rogers, P.E.  
[email](#)

**Topeka Chapter**  
Michael Ingalls, P.E.  
[email](#)

**Wichita Chapter**  
Alex Lane, P.E. .  
[email](#)



## STATE EVENTS

### KSPE 2023 ANNUAL CONFERENCE

JUN 21 – 23, 2023 | OLATHE, KS  
EMBASSY SUITES OLATHE, 10401 S RIDGEVIEW RD.

### EFK 24TH ANNUAL GOLF TOURNAMENT

SEP 29, 2023 | MANHATTAN, KS  
COLBERT HILLS, 5200 COLBERT HILLS DR.



KSPE held a joint PEG seminar with MSPE at Burns & McDonnell in Kansas City on April 6th, 2023. The curriculum focused on current issues in public sector engineering, and the event featured several different speakers. Attendees were able to earn up to 6 PDH credits.

## CHAPTER EVENTS

### WICHITA CHAPTER

BEERS WITH ENGINEERS  
MAY 16, 2023 | 5 PM | NORTONS BREWING COMPANY

### WICHITA CHAPTER

AWARDS BANQUET  
MAY 24, 2023 | 5:30 PM | SCOTCH & SIRLOIN

### EASTERN CHAPTER

2023 ANNUAL AWARDS BREAKFAST  
MAY 25, 2023 | 7 AM | YAYA'S EURO BISTRO

### HIGH PLAINS CHAPTER

BBQ POTLUCK AND ZOO TOUR  
JUL 21, 2023 | 12 PM | TBA

### HIGH PLAINS CHAPTER

LEGISLATIVE LUNCH & PRESIDENT'S VISIT  
OCT 20, 2023 | 12 PM | TBD

# FOUNDATION REPORT

by Wayne Nelson, P.E., F.NSPE



The Engineer's Foundation of Kansas (EFK) Board of Directors met February 10, 2023, at Kansas State University. Since then the board has been busy.

At the end of January members of the board helped with the judging at the Future City competition. February is the month that the local MATHCOUNTS competitions are held with the local winners advancing to the state event. The state event was held March 4th on the Washburn University campus with seventeen teams competing.

February is also when we celebrate Engineer's Week and EFK had a presence at the joint E-Week lunch in Kansas City Feb 23. Thank you to Kristen Leathers-Gratton and Affinis for sponsoring the space.

The EFK recognition program is proud to announce our first Benefactor level member, Don Rathbone. To achieve this level a member must provide a gift of \$100,000. Don provided his gift this past January to establish the Lynda Rathbone (Lynda is Don and Lynne Rathbone's daughter) MATHCOUNTS AWARD as a means to support the travel of the state team winners and their parents to attend the national competition. The national event will be held May 14-15 in Orlando, Florida.

Sadly, I must also mention that Don Rathbone passed away April 11, 2023. Don was the Dean of the Kansas State University Carl R. Ice College of Engineering for 24-years. His influence on engineering not only at Kansas State but nationally was immense. A brief notice of Don's passing can be found [HERE](#).

The board of directors will meet June 21, 2023, in conjunction with the KSPE Annual Conference at the Embassy Suites in Olathe.

**EFK**  
**24th Annual Golf Tournament**  
**September 29, 2023**

**Colbert Hills**  
**Manhattan, KS**  
**8:00 am Registration**  
**9:00 am Shotgun Start**

**STAY CONNECTED WITH THE KSPE MEMBER APP**

THE MEMBER APP PROVIDES EASY ACCESS TO:

- Search the Membership Directory
- See the Events Calendar
- Register for Events
- Access your Personal Profile

SEARCH FOR "WILD APRICOT FOR MEMBERS" IN YOUR APP STORE TO DOWNLOAD

Download on the App Store GET IT ON Google Play



THANK YOU TO OUR 2022-2023  
ANNUAL PARTNER SPONSORS!

PLATINUM SPONSORS



GOLD SPONSORS



SILVER SPONSORS



BRONZE SPONSORS

